

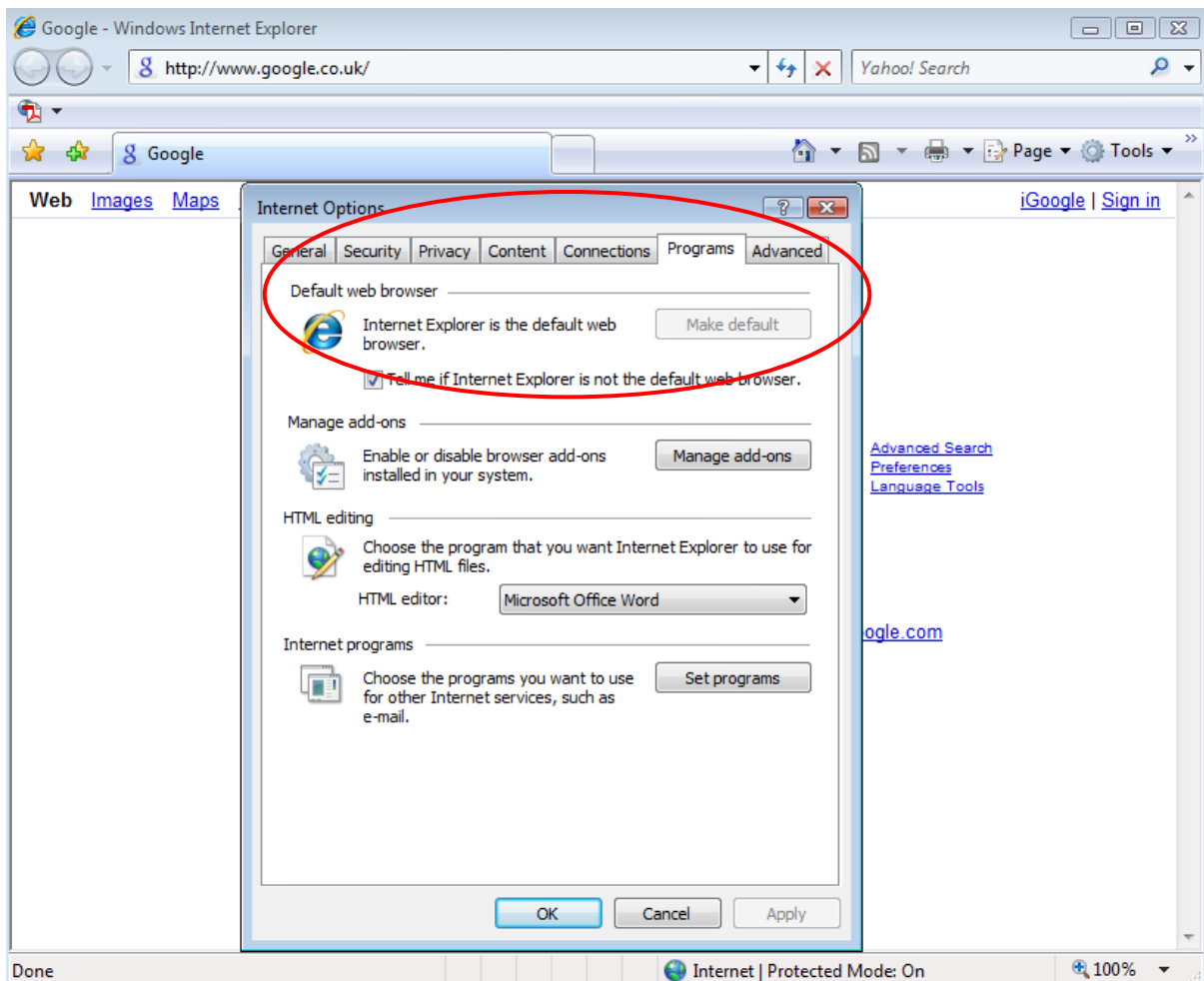
## DEFAULT WEB BROWSER

One reason why the application will not connect to the server is due to there being no default web browser installed. Below are the methods of check this for some popular web browsers

### INTERNET EXPLORER

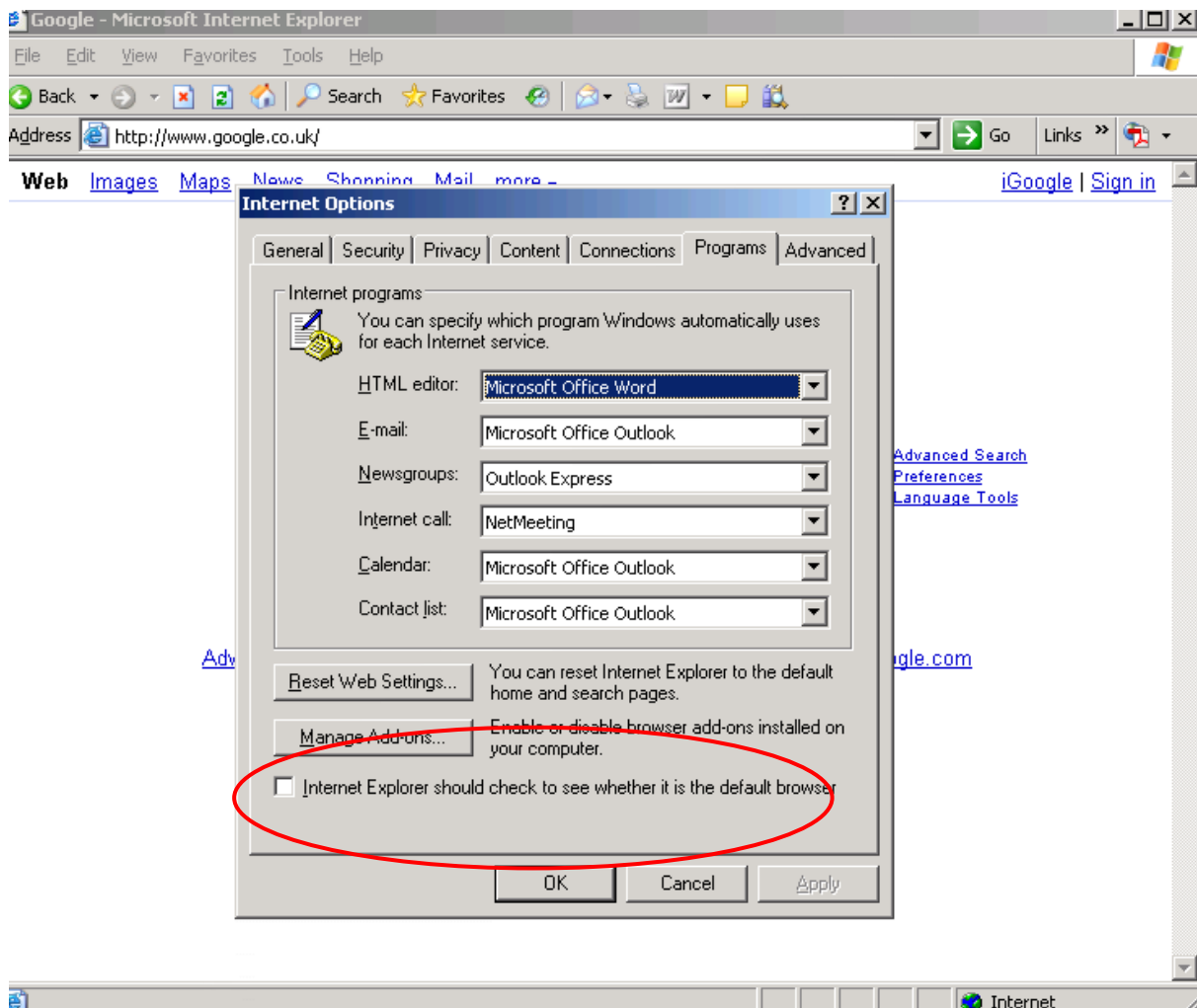
In Internet explorer 7, go to tools -> internet options -> Programs

Top of this tab is the option to make IE the default browser. Click on save.



In Internet explorer 6, go to tools -> internet options -> Programs

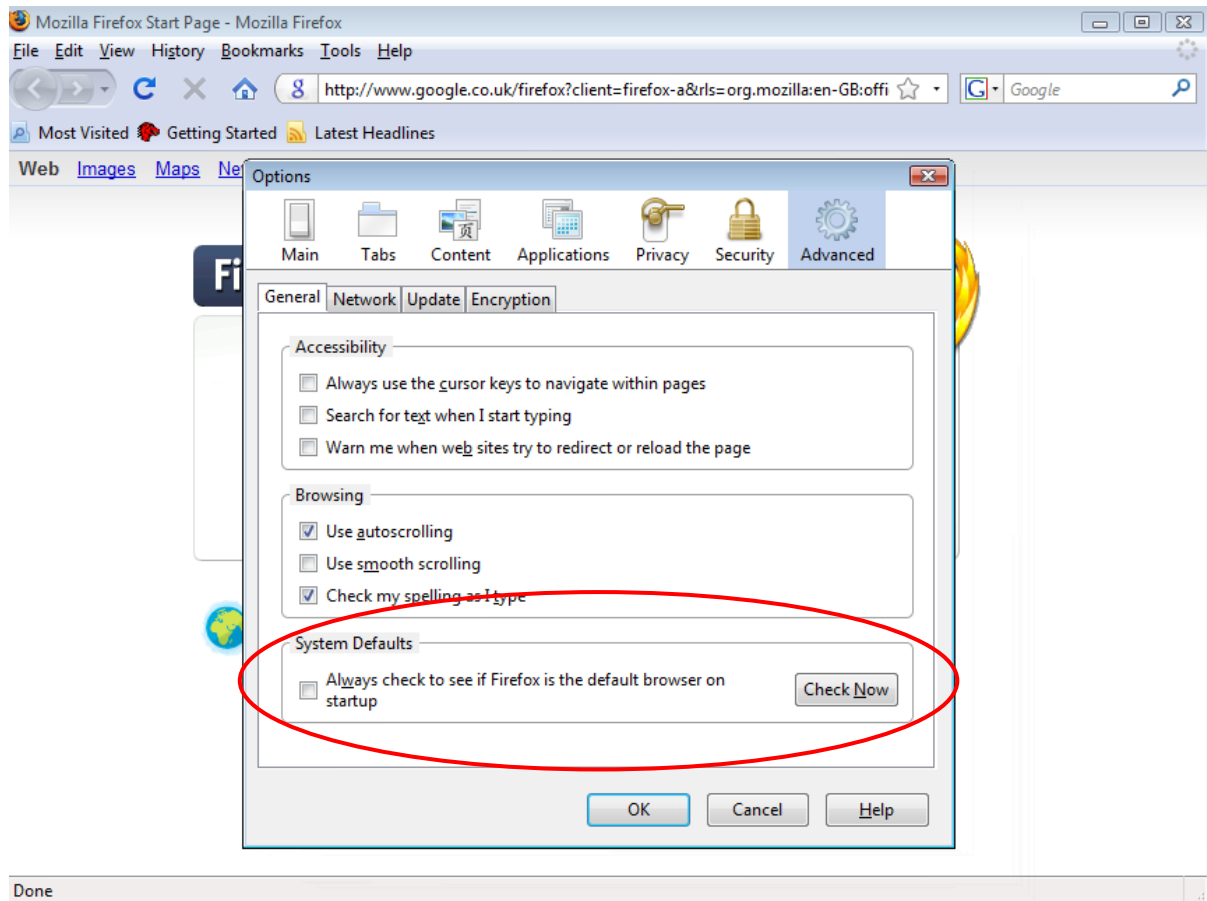
At the bottom of the window is a check box for IE to check that it is the default. Check this. Save, then restart explorer and it should ask if it is not the default – click yes to make it the default.



## FIREFOX

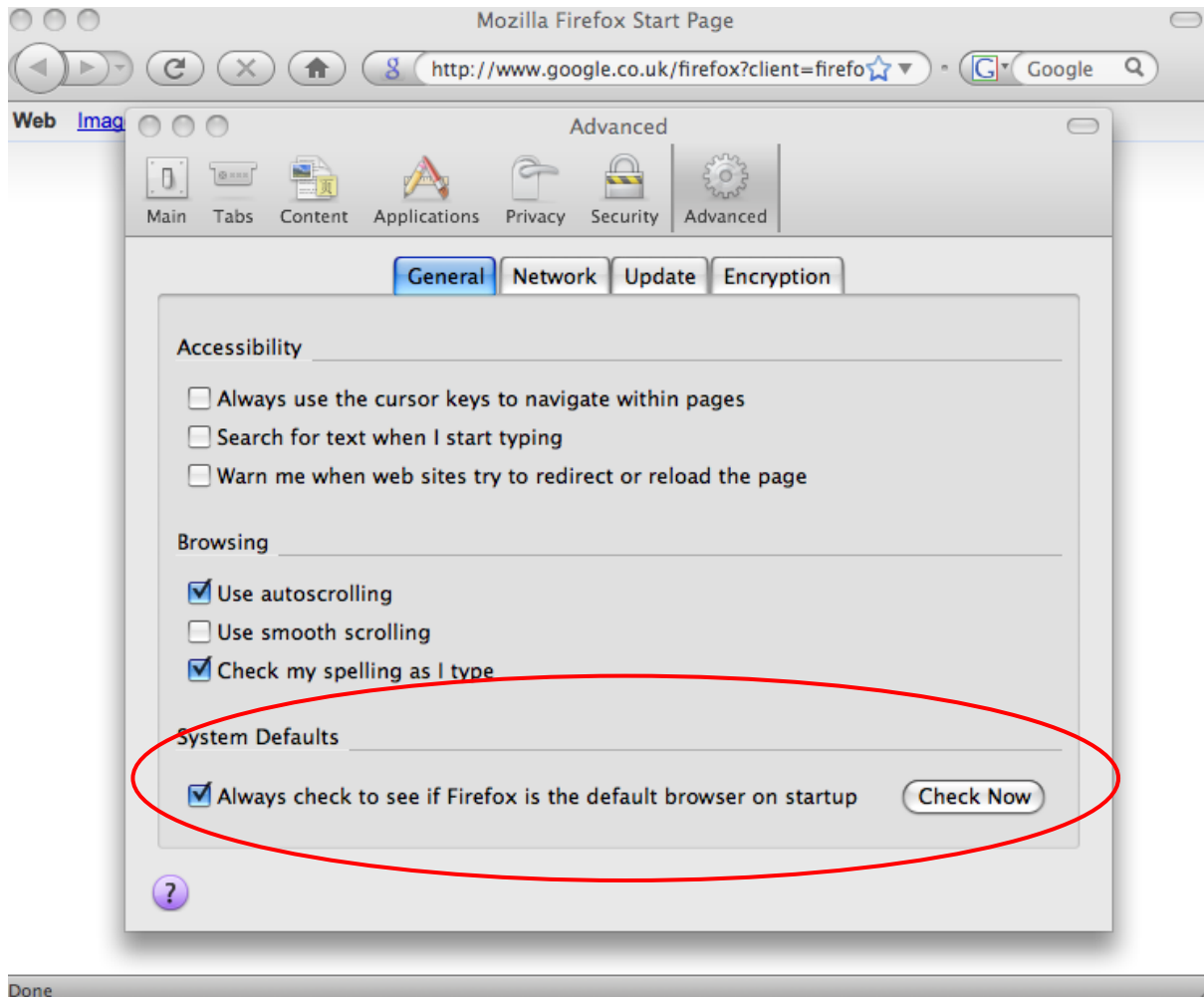
In Firefox (PC), go to tools -> options -> Advanced.

Under the system defaults (at the bottom) is the check box for the default browser



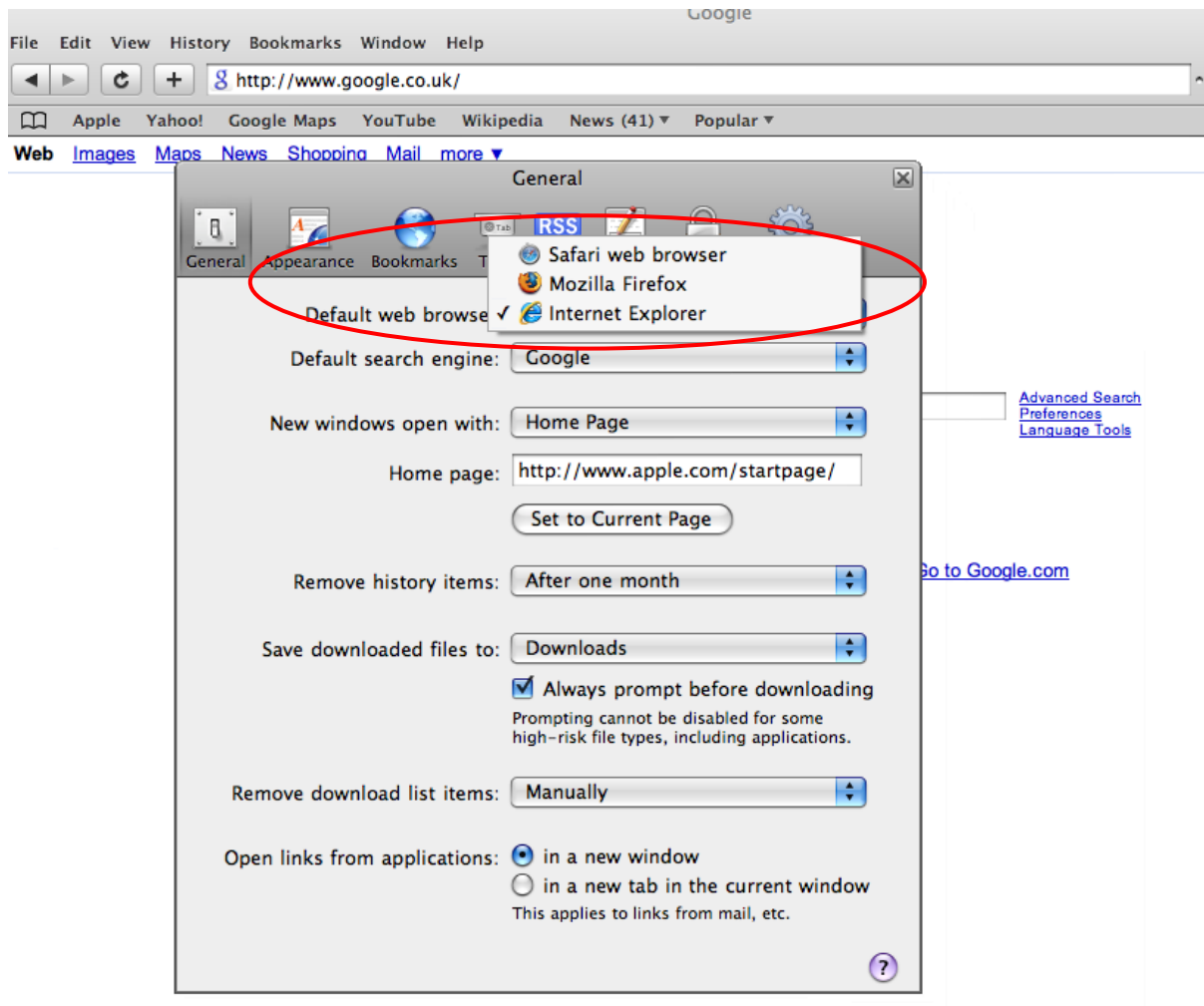
In Firefox (Mac), go to Firefox->preferences -> Advanced-> General tab,

Under the system defaults (at the bottom) is the check box for the default browser



## SAFARI

Safari (PC), go to Edit -> Preferences -> General and there is a pop up list to chose the default browser (make sure the one chosen is installed!)



Safari (Mac), go to Safari -> Preferences -> General and there is a pop up list to chose the default browser (make sure the one chosen is installed!)

